

The Spiritual Scientist

SCOLE, NORFOLK, ENGLAND

Plans afoot to spread the Word

A solid base is now being established at the village of Scole in Norfolk by way of preparation for the future work of the *New Spiritual Science Foundation*. We have already almost completed the refurbishment of the second Scole cellar, which will serve as an area where visitors to the Foundation and the Scole Experimental Group can enjoy a cup of tea and a chat after sittings or during the course of the half-day seminars which will be available to readers in the not-too-distant future.

The number of subscribers to the bulletin continues to grow steadily, and we have now set ourselves a target of 750 copies per issue by the end of the year. That is the magic number of subscribers we need in order to justify changing the publication into a glossy, professional magazine format from issue number six onwards (To include the March, 1996 issue). One of the main reasons for this is that regrettably, the current format fails to do full justice to the photographs which have been received by the Scole group during their ongoing experiments, but we *can* present them in all their glory, with a far more exact reproduction if we use glossy paper.

In order for us to achieve this easy target, we are appealing to all of you for your help. If you enjoy the bulletin, please tell your friends about it so that we can boost the number of subscribers in order to reach our target. If everybody managed to recruit only *one* more subscriber each, then we would quickly be in a position to confirm the new intended format as planned! We have plenty of leaflets/subscription forms available for those who are interested, (ask and you shall receive!) and are currently preparing a suitable broadsheet which will explain more fully what the *New Spiritual Science Foundation* is all about, as well as giving some basic details of the fascinating work we are constantly undertaking.

We have by now established firm contact with a number of open-minded Professors and Scientists throughout the world who have shown a definite interest in our work, and we believe that both the foundation and the scientific establishment have much to gain from a policy of sympathetic mutual co-operation in elevating *Spiritual Science* to its rightful place in the scheme of things. Certainly the team of spirit scientists who work with the Scole group have expressed

much excitement at the prospect of a regular vocal interchange of facts and ideas with scientifically minded people of all nationalities across the globe.

And what news of the phenomena at Scole itself? The last three months has been a most exciting time in the Scole group, and there have been further significant rapid advances in the quality, scope and duration of the energy-based physical phenomena. The members of the Scole group are themselves becoming gradually more aware and spiritual in their outlook and everyday lives. It is no exaggeration to say that they are all totally thrilled with the latest developments pertaining to the group and its phenomena. Over the two years that the Scole group have been getting dramatic results, they have learned never to be surprised at whatever happens. Anything is possible, or should I say *probable* in this case, and it has become a regular thing for new phenomena to burst forth suddenly and unexpectedly during a group experimental sitting. ■

Inside:

Complete Vocal Contact!

Catalogue of Phenomena

CONVINCING

THE

Scientific

MIND

by Piers Eggett

People I meet are often surprised to learn that I am both a government scientist and a committed Spiritualist. Somehow, the two don't seem to go together, but I am by no means unique. I think of myself as following in the footsteps of the pioneers, some of them far better scientists than I will ever be, such as William Crookes and Oliver Lodge, to name but two. These people had reputations at stake, which I do not; yet they were not afraid of making their views known, so why should I worry about what people think of me? My career has reached its peak, more of a plateau really, so I have nothing to lose. Also, I am pleased to say, there is a growing number of young scientists who are showing great interest in psychic phenomena and spiritual matters. Scientific people, however, are notoriously sceptical, so what can be done to help convince them of the truth?

Perhaps the best place to begin is to look at what finally convinced me that Spirit really exists. Admittedly, I was already part way there, since from childhood I had been aware of spirit people and occasionally had clairvoyant flashes, but awareness is a feeling, and not tangible proof. What I needed was something more definite.

I was sitting in bed, reading, one night in 1987, when I was suddenly aware of a man's presence in the room. This, as I have said before, was not unusual in itself, except that the feeling was particularly strong. I thought no more of it and finished my book, turned out the light and went to sleep. Suddenly I was awoken by something, and as I lay there, wide awake, the feeling of a presence was quite intense. The atmosphere was electric and

highly charged. Although the room was quite dark, I looked around me, and was startled to see beside me, no more than a foot away, a small cloud of what looked like white smoke! The cloud swirled around as it grew in size and intensity, and then, suddenly 'locked on' to a form. It was the face of a man, and was perfectly detailed, with every hair and wrinkle clearly visible. He was grinning at me, and I remember thinking what lovely even teeth he had! He then leant over, and although I couldn't see his arms, I could clearly feel them as he embraced me in a hug. His arms were strong and absolutely solid; without doubt, he was real! I asked him for his name, and in a soft but audible voice, he told me. He spoke a few more words, and then kissed me on the cheek before drawing back, and gradually he faded away. Now I could say in all honesty that Spirit is real; I don't just believe it, I know

it! I have since that night had many similar meetings with my spirit friends, and each occasion is a wonderful experience. Sometimes the electric field is so powerful that, when I reach out to touch the person, I am stopped by sparks dancing on my finger tips and an electric shock travelling up my arm, while on other occasions I am able to hold them by the hand, and feel the fabric of their clothing. Once, the 'smoke' was bright green!

We rely on our senses to tell us about the world around us, and although I know they can be fooled, I would say that if our senses of sight, hearing, touch and smell simultaneously indicate that someone is present in the room with us, then it must be a fact. We normally accept a person's presence with less sensory input than this, after all. We don't have to touch someone to prove they really are there. This proof, however, is personal to the recipient, being specifically tailored to their particular need, and obviously does not constitute proof to anyone else.

Similarly, the small gifts apported to us either in circle or directly into our homes, are quite meaningless to those not present at the time, no matter how precious and undoubtedly cherished they are to those who receive them. I have been privileged to receive a number of gifts this way, and my scientist friends are always keen to see them and examine them closely, but at the end of the day, they have only my word as to where they came from. In any case, what exactly do they prove? They show that it is possible to dematerialise an object in one location, and re-materialise it somewhere else, but do they prove the existence of Spirit? Incidentally, we are told that since time does not exist to Spirit, this is no barrier and things can be transported from the past as well as from the present. It is, though, more difficult to bring

items from the future. The only way in which apports offer any evidence of Spirit, is in the significance of the article to the recipient. In fact, when we have received more than one item at the same time in circle, the nature of each gift has made it plain which belongs to which sitter, thus indicating the work of a Spirit mind, which knows each of us well enough to be able to select a relevant gift.

One of the main ways in which a scientist verifies a theory is by testing it repeatedly with a suitable experiment. When we put Spirit to the test in this way, we immediately run into difficulty. Firstly, many effects have been observed, but do we really have any idea of why and how these things are brought about? Secondly, results are not consistent. For example, it is a well-known feature of physical circles that a fall in temperature occurs, but the size and speed of the change depends on various factors such as the place, the sitters and their energy levels, and of course, the intention of the spirit workers on that particular occasion. Also, temperature changes tend to be much more marked below knee level, so it is important to site the thermometer correctly, and to use an instrument with a sufficiently rapid response.

It is important, therefore, to have experimenters who have at least some experience of the work. Even then, results are likely to be very variable, since no two circles are ever the same. Sitters would soon lose interest if the circles repeated themselves every week, and Spirit too would not tolerate such a waste of time. These precious moments we are able to spend in the company of our spirit friends are far too valuable to waste; after all, it takes effort and commitment on both sides. There is work to be done, such as healing, and teaching and so on. Care must also be taken not to influence the results. I was

aware of this possibility as a young experimentalist, over twenty years ago, when I used to ask not to be told what results to expect, because I knew that if we were looking for a subtle effect, I could sometimes influence it just by thinking about it. How, then, do I go about convincing my sceptical colleagues? The best proof of all is, of course, the kind of personal proof which I have had, and I am sure that anyone who is genuinely seeking conclusive proof, will eventually be given it. Meanwhile, there must be something I can do to whet the appetite of the scientific mind.

I put this problem to Spirit one day, and was immediately shown the inside of a library. The walls were covered with bookshelves to the ceiling, and in the foreground stood a group of scientists from the past. One or two faces were familiar, but most of them I didn't know at all. One man stepped forward and explained that they understood my desire to help, and the problems I was facing. He went on to say that they would be impressing my mind from time to time, with thoughts about various experiments and measurements which could usefully be made. He indicated the books behind him and said "Look, we have all this knowledge to work from, and there is no shortage of ideas over here". Needless to say, I was tremendously encouraged by this, and look forward to working with these fine people. They have already given me some ideas which I am eager to try out. I think it is so important to work with Spirit, if we can, as their task is difficult enough without having us against them.

One of the major problems with physical phenomena, at least to the sceptical mind, is that of light, or should I say, the lack of it. Most work of this sort takes place in complete darkness, which it must be said, if you don't have complete confidence in the integrity of the medium and sit-

ters, can appear highly suspicious to an already critical investigator. Equally, from a spiritualist point of view, it can be argued that if you distrust others in the group, you should not be in circle in the first place, and in any case, phenomena are unlikely to occur under such conditions. Spirit tell us they are well aware of this problem, and are as keen to work in light as we are. The trouble is, working in the dark is much easier for them, and to develop a medium to work in light conditions takes much longer. It has been done in the past, and I am confident that before long, we will, once more, have physical mediums working in, perhaps not daylight, but certainly subdued light. Once people are sure that they are not being deceived, an enormous degree of scepticism will be removed. I'm afraid though, that many scientists will still have their doubts.

When it comes to scientific investigations, the reader may

conclude that I am in favour of physical mediumship only. This, however, is not so. I believe that mental mediumship has a vital role to play, since it works on a mental level in more ways than one. In short it makes us think, and this is an essential part of breaking down the resistance of a stubborn mind. We cannot force people to believe as we do, but if we can prompt them to think about our words and the evidence given by high quality clairvoyance, then we have done them an enormous service. If they can just admit to themselves that the existence of Spirit is a possibility, then when they are ready for their own personal proof, they are less likely to turn their backs on it or to look around for signs of trickery. They are much more likely to say to themselves "This really is true!"

It is my view that a big stumbling block in the minds of sceptical scientists is that of fear. They have been trained to believe

that everything is measurable and understandable, to the extent that they think that anything which can't be tied down and understood by physics, cannot possibly exist. This blinkered and arrogant way of thinking has led to a scientific community which is afraid of being shown up as not knowing all the answers. I can see nothing wrong in saying "I don't know". After all, there is so much that we don't know, and where is the shame in admitting it? The most sceptical people will not have their comfortable world turned upside down, and will deny the very best of proof. For them, it would mean having to re-write the science books and the laws of physics. Well, why not? As Spirit have said to me, "You will never be able to convince everyone, and as a result, you will suffer much scorn and ridicule, and you will need to be strong to withstand it. We will be there to support you. Be thankful for those you are able to convince". ■

The further Wisdom of *Manu*

Manu, as a member of our spirit team at Scole, continues to give guidance with regard to both our individual and our group work. He also tries to explain about vibrations and energies - vital for groups such as ours whose work is primarily involved with energy-based spirit technology.

Recently he had this to say: "Each of you are vibrating in space. The very chair you are sit-

ting on is vibrating, and so is the room. All is vibration, and your own vibration is affected by your thoughts. Be mindful of your thoughts and feelings when you come to do this work. Tell others that wish to work in this way to put aside everyday thoughts and worries, and to come to their groups with a clear and happy attitude of mind. The more harmonious you are, the easier it is to blend, balance and attune the energies for our work".

He reminds us that we are a part of all that lives and breathes - a part of the planet itself: "When you raise your consciousness, you raise others, for there is a spiritual link that binds all together. Your consciousness can reach out and give hope to many. Know that much is achieved in this way; much that you will never hear about, but know that it is so. Your loving thoughts and energies are used most wisely by those in spirit that blend with you. Have vision; be touched from within, and strive to have heart and mind in perfect balance".

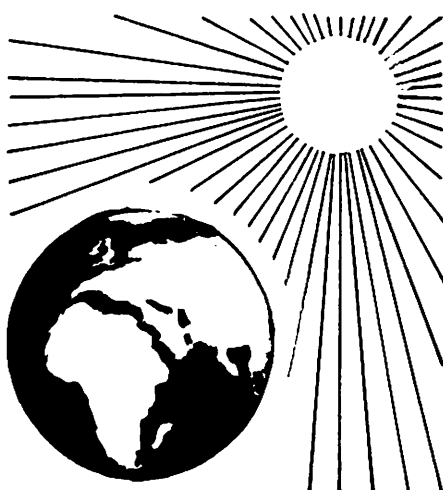
We all try to follow the teachings Manu brings to us. His words always inspire us to try harder to raise our own spiritual awareness, as we know that by doing so, we shall help strengthen the group energies - which will in turn help others on their spiritual pathway with love and understanding. ■

Changes:

The way to perfect harmony

As a regular member of the Scoble group, I was reflecting recently about the changes that have taken place since we first began. Not only has the phenomena itself developed so rapidly from that of those early days, but also there have been subtle changes within the personalities of many of our guides and helpers since they first made themselves known to us. Over a period of time, we have come to know and love our spirit team to the point of almost thinking of them as our 'extended family'.

I believe it is true to say that in those early days, some of the communication came in a very natural, down-to-earth manner. The humour of the guides, and their sense of fun helped to unite us all together to form a harmonious and loving bond within the group. But as the months passed and the wonderful phenomena developed, I noticed a number of subtle changes within these spirit friends. Their understanding grew visibly, and they were able to converse about the work on a different level. They had become more spiritual; but still retained that same loving personality we had come to know so well. Although I must add that this does not prevent them from still cracking some awful jokes at times - even worse than ours - so it shows that their sense of humour remains unaffected!



Thinking about these changes, it occurred to me how each one of us within the group had also changed since those early days. We too have a greater understanding now about many things. I like to think that each of us has become more aware of our own spirituality, and more tolerant of others around us. In fact, as the phenomena has been developing, so have we - on both sides of life.

Should this surprise us? Too often we tend to forget exactly why we are sitting in our groups. It is not just to achieve the physical manifestations - wonderful as that may be in itself, but it is also to open our hearts and minds to the truth by becoming aware of, and knowing our true selves. To remember that we are spirit, and to remind ourselves that each one of us has within us that small spark of divinity which unites us together, and makes us a part of a great whole.

I know many of our readers sit in their own development groups, and one of the most common problems of which we hear is the difficulty of maintaining that loving harmony between sitters which is so necessary to provide the results we all seek. Because we have to live in this material world, with all its everyday worries and cares, it is only natural that we should find it difficult at times to put our feelings aside in order to be in perfect harmony with each other and with spirit.

I would say - be kind to yourselves! Do not set impossible targets. Realise that even in the closest, most loving families; differences do occur. We are all individuals. Growing; learning; making mistakes. As we watch this happening to members of our family group, we try to be tolerant and make allowances. But above all, we go on loving in the same familiar way. Try to feel the same with fellow sitters in your own spiritual groups. When little annoyances and irritations intrude - try and stand aside and view the picture a little differently.

Remember that each of you has come together freely, with the desire to serve spirit; to sit for an hour or two each week so that your spirit friends can come amongst you to work within the group. It really is so little that spirit ask of us, and if we remember this constantly, I think we would sit with renewed effort and understanding.

The rewards of our efforts *can* be beyond anything we have ever imagined! So to all those groups sitting round the world like small beacons, I would say - open your hearts, and more importantly, your minds. Set no limits to the wonders that might develop within your groups. For spirit tell us that we are all moving towards a wondrous time. ■

RED & YELLOW BLUE & GREEN

In issue number three of the bulletin, (June 1995) we touched a little on the subject of spirit lights within the Scole Experimental Group sittings, and in so doing we covered the latest news of the Scole experiments up to and including the end of April, 1995. It is impossible to bring our readers information which is 100% up to date, as the cut-off deadline for copy to be included in the bulletin must necessarily be about a month before the issue date, in order for us to have ample time to prepare the various items for publication.

I am happy to report that there have since been exciting ongoing developments with various aspects of the phenomena, including the spirit lights observed within the group, which are now a regular feature of many of the Scole sittings. We have also had many opportunities over the weeks to actually photograph some of the spirit lights with a conventional 35mm camera, although the whole process of obtaining such photographs has been a little hit-and-miss whilst we attempt to discover the correct film speeds and exposure times of the shots for optimum results.

Nevertheless, we do now possess an interesting series of photographs of the different spirit lights as they appeared to us, both inside and outside the glass dome. We have been fortunate too, to capture some photographic images of the self-luminous S.V.O.'s (Sustained Visible Objects) brought by spirit for us to see.

The Development of the SPIRIT LIGHT Phenomena

Since they first began to manifest within the glass dome, creating an effect similar to a giant lightbulb on April 9th this year, the spirit lights have continued to evolve to their current favourite format, which is totally different from the early dome lights, but is apparently far more suitable for the visible illumination of solid spirit forms as they present themselves to us.

Far from being restricted to a single colour; as the title of this article suggests, during the period of the evolution of these spirit lights, their colour has passed through all the primary colours of the spectrum.

The first examples were of a light *blue* hue, as was confirmed by the 35mm photographs we managed to take of them at the time, and the team initially concentrated on expanding their constant duration until, after just a few short sittings, they were able to sustain the illumination for some 52 minutes. The blue lighting, however, was not particularly bright overall, to the point of being able to see one another in the room clearly, and it was not long before the spirit scientists were experimenting with *red* lights on April 26th, as reported in issue number 3 of the *Spiritual Scientist*.

The red lights definitely looked promising, and certainly they were much brighter in the amount of illumination they provided for the sitters. In the weeks follow-

ing their initial appearance, we were gradually able to get some excellent photographs of these brighter red lights. The best effect achieved on a sustained basis was when the lights left the dome and entered into the tubular clear PVC legs of the plastic stand on which the dome was located. The curved structure of these legs behaved rather like a lens, and magnified the beams emanating from them.

Around this time, too, the red light entered a semi-opaque sealed tupperware tub, which was illuminated almost as brightly as a table lamp. This effect can be clearly seen on some sets of photographs we took during sittings.

It was only a short step from the brighter red lights being observed to the point where they served as background illumination against which solid spirit entities were able to deliberately show us their animated fingers, hands and arms, when these solid parts of the spirit entities bodies were several times passed in front of, or behind the lights on the central table. One spirit friend actually picked up one of the red spirit lights in his hand, and carried it about the table so we all got a good view of the hand, alternately with palm upwards or downwards. The light shone through the "flesh" and fingers, outlining the hand quite clearly.

During those sittings in which we experienced red lighting in its various forms, we were also treat-

ed on several occasions to the sight of a number of S.V.O's. These were spirit objects, especially brought by the spirit operators for us to see, that built up in front of our eyes in what appeared to be a solid format, but being spirit objects, they are very difficult to describe in earthly terminology. The first one we observed on May 1st seemed to be attached to the outside surface of the dome. It was self-luminous in that it contained an amount of red luminosity, which appeared to be pulsating inside the shape, almost like something from a science fiction novel! It appeared to be constructed from some sort of folded and/or crumpled material which was both delicate and diaphanous and constantly changing its size and shape.

The object can really best be described as having roughly the size and shape of a sea-urchin, which was divided into orange-like segments. A few of these seemed to be removed, so that we could see into it. Several other of these S.V.O's appeared for us on the same evening. One took on the shape of a small wigwam, and the most dramatic of the lot that evening appeared *inside* and at the top of the dome, where it built itself up into a shape roughly akin to a delicately shaped flower. A couple of photographs taken in the group have captured one of these S.V.O's admirably.

On May 10th, one of the photographs taken in red light showed a partially illuminated object at precisely the spot above the spare chair which would have been occupied by the face area of one of the solid spirit entities who was definitely sitting there at the time, and in another of the shots, enough illumination was provided by the red spirit light to show up the knuckles of another member of the Scole Experimental Group as he held up his camera ready to take his own picture of the proceedings. From time to

time that evening, the red light intensified momentarily so that all the sitters could be seen simultaneously. A spirit visitor picked up the red spirit light and took it back to his seat. He sat down and moved the light around as he tried to show us various parts of his body. On that occasion, we saw his legs, arms, and briefly his face.

Following a short holiday period by members of the group, the lights changed once again on May 26th. Early on in the sitting there were three or four spasmodic flashes of a brilliant *yellow* light before a *green-hued* light established itself in the legs of the dome stand.

Three days later the green light developed further. This time it emanated from within the dome, and its source appeared to us to be a small (3/8 inch) solid crystal sitting on the inside base of the dome. We assumed that this must be an apport, and asked about it, but we were told that whilst the crystal appeared solid, it was in fact not so. Apparently they were now using crystal energy to produce the greenish light, but what we were seeing was actually the spiritual essence of a crystal, brought specially for the purpose.

The overall effect was somewhat similar to limelight, and had a dull but subtle illumination. We were told, however, that this type of light would not produce 'beams' as such, and that indeed proved to be the case. During the course of the evening, the light gradually became more intense to the point where we could vaguely see one another around the group. One of our solid spirit visitors pulled up a chair so that he was included in the group, then rocking backwards and forwards on his chair so that we could also see *his* shape.

The green lights continued for a number of sittings, and the group were told that the spirit scientists

were trying to achieve a perfect balance with them, so that they would be bright enough for us to see, but not too bright so that the solid spirit entities could not show themselves. On June 10th, the spirit team were able to maintain a continuous green spirit light in the dome (using crystal energy) for a record period of one hour and fifty-two minutes!! On the same night, we once again had the opportunity to see the fingers, hands and arms of a solid spirit visitor by the light of the dome.

One of the members of the Scole group had provided a bottle of champagne for us to celebrate the first real sightings of our tangible spirit visitors, and I must confess that we cracked this open following our sitting of June 12th! The light stayed on for over an hour and a half, and for 50 minutes, we were treated to the sight of a number of visible and definite moving forms, in the size and shape of human figures.

These appeared hazy and difficult to define at first, but they appeared to be gradually absorbing and partially retaining the green light so that they became almost self-luminous. On occasions, more than one could be seen at the same time in different parts of the room. They regularly came close to the light so that we could see them clearer, briefly showing their hands, fingers, arms and legs, as well as their heads. It was explained to us that what we were actually seeing was the spiritual essence of these visitors who showed themselves in human form for identification purposes.

Another spirit entity sat on a chair in the corner. He stuck a luminous tab on his forehead, which clearly illustrated his position as he moved about on his chair. He then put a second tab on his hand and proceeded to wave to us, before he put a final tab on his foot - and raised that

Gift Of The

G A B .

Up till recently, those spirit entities who had been with us in solid form had not been permitted to speak during their visits in a sustained way, so that we could hold a rational and prolonged conversation with them, a ruling which could prove at times to be somewhat frustrating. Vocal contact on an independent level had been restricted for some time to lip-smacking noises and blown kisses; to whistles and guttural grunts, with perhaps the odd *yes* and *no* thrown in.

Once it became clear to the spirit team however, that they had been successful in their experiments with the spirit lights and the visible spirit entities, they turned their attention to the matter of sustained spirit voices, in order to complete the full contact we might have with them. We were told in no uncertain terms that we could soon expect to see our spirit friends fully in the illumination they provided, and to carry on rational conversations with our visitors who would speak to us with Spiritual Energy Voices which were independently generated.

It was not long before we were to experience the first attempts at this, and during the sitting of May 22nd the whistling (which came from the direction of a solid spirit visitor sitting on a chair which had been provided for the purpose) became more sustained and developed into what appeared to be low, murmured speech. At this stage we were unable to determine exactly what was being said, but before the experimental session closed, our male communicator *did* manage to audibly and

clearly get out the word "sorry". A little later, before he departed, he turned to one of the sitters, and speaking just inches away from her face, told her "Thank you for my chair"!

A few days later, on May 26th, two of the solid spirit visitors, speaking in their own voices were able to convey their names - 'Cecil' and 'Maurice' to us as they made a great effort to practice their speech through Energy Voices. Over the next few weeks we noticed that several of the spirit visitors were making a great effort to practice their communication skills using this method, but in the main, the whispered voices were not yet clear enough for us to understand much of what was being said.

At the group sitting on June 26th there were several attempts by our solid spirit friends to speak, culminating in a more sustained five to ten minute period when the energy voices became somewhat louder, although as yet, the necessary clarity was not there. There was a marked difference between the voices on that occasion and previous efforts. It sounded as if the source of the voices covered a large area of, say, the size of a football, instead of the smaller area occupied by a human larynx, and there was a peculiar resonant quality about it similar to an echo. Despite the lack of precise clarity, we could

make out some words and phrases, as well as a few bursts of mirthful laughter. One of the scientists explained to us that they had been trying a new method of voice production, and that the quality would get better. What we must remember, however, is that the solid spirit visitors who would be speaking to us have no human vital organs within their bodies. Consequently the lack of lungs and vocal organs necessitates an alternative method for the production of their voices in a form that will be audible to us.

The real breakthrough came on July 3rd. In his opening address, Manu told us that the team were wanting to do something different during that sitting, and that is exactly what they did!

Over the course of the evening we had three or four separate communicators speaking to us in a sustained way with individual energy voices. The first of these, who introduced himself as 'John' soon cottoned on to the idea of picking up the tupperware tub on the table and speaking into it to give his voice extra depth. This made the voice quite clear and audible, and 'John' told us he would tell the other communicators to do likewise, which they did, thereby greatly improving the phenomena. As each communicator finished speaking, the tupperware tub fell back noisily onto the table, from where the next

communicator retrieved it.

The second lucid voice communicator was 'Jimmy', and he gave us a running commentary as he performed simple tasks. He would tell us "I am standing on the table", or "I am going to ring the bells", or "I am going to sit down", etc. Each time his spoken intention was followed by his action being audibly completed.

As the weeks have gone by since, the voice phenomena has just got better and better as it develops rapidly. A number of regular communicators have established themselves as experts in speaking to us this way. Our friend John, for instance, has become particularly proficient, and can discuss at length locations of mutual interest to himself and other sitters where he used to live when on earth. He will often draw up a chair and chat to us whilst he is sitting on it. 'Teddy' is another regular communicator who talks to us at length, and has on one occasion brought along his friend for a chat - our first female voice communicator - a lady called 'Dorothy', who in her lifetime was a Spiritualist from the Yorkshire area, who sat with many mediums in her lifetime.

'Leslie Davis' is another spirit visitor who has already established himself as being an accomplished communicator through these energy voices. In his earthly life he was a singer and piano player on the club circuit, who had a stammer. This was quite apparent as he duplicated this earthly quality when he first spoke to us, but his communication has got much better due to the fact that he has made great efforts to practice his communication skills. In answer to our request, he has also recently sung to us. An interesting observation is that his singing voice is more confident and less hesitant than his speaking voice.

In just a few short weeks since the Spiritual Energy Voices began, we have been privileged to hold sustained conversations with several communicators who have so far simply dropped by on one solitary occasion for a chat. An evolved spirit entity who we believed at the time to be Paxton, was extremely proficient when he first addressed us in this way and it was interesting to note that the voice sounded almost identical to that of Paxton when he has spoken before through one of the mediums in trance.

A very powerful Red Indian helper of the Scole group also had little difficulty in conversing with us in this way and in identifying himself, and it was noticeable that both he and Paxton did not need to speak into the tupperware tub in order to be heard clearly. As other communicators become more familiar with the Spiritual Energy Voices, they apparently no longer need this makeshift 'soundbox' to help them with their conversation. Once the breakthrough has actually been made with a particular communicator in this fashion, the adjustments (or fine tuning) by the spirit team to render such a voice loud and clear to the ears of the sitters take very little time to achieve, and the conversation thus becomes so natural that it is hard to imagine that we are talking to people who have 'died'!

What *has* surprised us though, has been the ease and speed with which direct conversation between the group and the spirit world has evolved and developed. Whatever the reason, it has provided yet another exciting avenue down which we can proceed to provide further proof of the survival of the human soul beyond the gateway known as 'death'. ■

RED & YELLOW & BLUE & GREEN.....

.....continued from page 7.....

onto the central table. He then bent down and tried to untie the shoelaces of the sitter next to him.

During a sitting at the end of June, we had a wonderful display of visible spirit entities. In addition to the usual green light in the dome, a yellow light travelled around the group, giving a brief

'sheet lightning' illumination effect from time to time. One of the spirit visitors spent ages bending towards the dome and patting it so that the misty shape of his body and hand could be seen unmistakably. At one stage, he did appear to be standing *through the middle of the table* with his feet on the floor beneath. The view we got of his face area,

arms and hands was quite superb, but despite our attempts to capture this wonderful display on photo, his likeness did not come out when the shots were developed. Just an image of the silvery-green light.

During July, there has so far been less success with the lights, since the team have moved on to a far more exciting development - Spiritual Energy Voices (which you will find reported separately in this issue). What the spirit team are heading towards is a perfect balance, so that we can have solid spirit visitors with us that we can see in the lights they bring, and simultaneously converse with. That day is not far away!!! ■

THE EARLY *Photographic* EXPERIMENTS

In the last two issues of the *Spiritual Scientist*, you will have read about the remarkable images that we have been receiving on unopened 35mm films. The most important feature of this type of photographic phenomena is that *no camera* is used to produce these amazing pictures. We were told that they were not produced by the normal photographic method, following exposure to light, but by a chemical change taking place within the emulsion of the film. When you consider the number of images we have received in this way up until the present time, and the way in which we received them, you only then begin to realise just how incredible this phenomenon is! However, no less incredible are the very first photographs we received back in March, 1994, and it is these early pictures, and the way in which they were brought to us, that I will try to describe to you here.

It all began when one of the spirit team told us that they wanted to show us what could be achieved when using this very new approach to physical phenomena, and how they could manipulate and adapt the blend of energies that are now available to them. I say *now* because they explained to us that although the use of energy is not entirely new to them, it is only now that they are able to blend the three main



This picture was received by the Scole Group in an unusual way, and is a copy of a wartime photograph of the burnt-out wreck of a bus at the height of the blitz in a major city.

types together, i.e. Spiritual, Physical (from the sitters), and Earth energies, and use them to show us the wonders of this new *Spiritual Science*.

We had, up till this point in time already witnessed many different forms of physical phenomena - some of which were very new, and as yet had never been experienced anywhere before. This of course made us all in the Scole group realise at a very early stage that we were experiencing something very special indeed!

The spirit team asked that we bring a camera with us to our next session, loaded with an ordinary 35mm film, and introduce it into the sitting, ready to capture what we naturally thought would be some form of spirit manifestation which we would be shown. We were, of course, only too pleased to oblige them, and so at our next sitting we placed an ordinary 35mm camera (S.L.R.) on one of the vacant chairs in our group.

When the session was under

way, they thanked us for co-operating with them and proceeded as normal. As was usual at that time, we were soon entertained by a display of tiny spirit lights that manoeuvred with great skill in and out of the sitters and around their heads. One of these spirit lights soon became aware of the camera placed on the empty chair and began to dance around it with seeming interest. These light displays never fail to amaze us, lifting our vibrations, and therefore helping our own individual energies to be 'given up' and used as required. This is often made obvious to us by the spirit team when they are working hard on a particular experiment. Just changing the tempo and mood of the music *can*, and usually *does* have a marked effect.

Further on during that important sitting, one of the spirit team asked a sitter to pick up the camera and point it at the table. She was then asked to take pictures and wind on the film as and when instructed. 'Now', the spirit helper would say every few seconds or so. The sitter was then asked to replace the camera on the chair, where it proceeded to take five more frames by itself!! It then remained on the chair until the session was over.

You can imagine the excitement we all felt at the prospect of our capturing an image of a spirit form on film, but we had to be patient until it was developed by the photographic shop. When we collected the film we examined the results with total disbelief! We were convinced there had been a mistake at first, and that we had been given somebody else's photographs - but no! The shop assured us that they were in fact *our* prints, taken from *our* film. An interesting point here is that the film used had been a colour film, but yet the results were most definitely black and white!

It was later explained to us

that these pictures do already exist somewhere here on earth, and that they are copies or part copies of those original images - which has indeed proved to be the case with regard to some of them. The pictures appear to us in varying degrees of focus and exposure (if these terms still apply to psychical imagery). Some require careful study before one can identify them, but once recognised, there is no mistake as to what one is seeing.

What follows is a brief description of those photographs in the order that they appeared on the film:-

1) This was a very clear photograph of St. Paul's Cathedral. The original was taken during the blitz in the Second World War.

2) Similar to the previous picture but taken from a different angle and not very clear.

3) This was a group of soldiers taken during the First World War. It is a fairly clear picture, and is possibly taken from an original sepia photograph.

4) A very unusual picture which is part of an original photograph taken during the Second World War. It was probably taken in London or Coventry, and shows the wreckage of a burnt-out bus. This picture is not very clear, but is recognisable. We discovered the original after being 'led' to the information.

5) This appears to be another picture of the burnt-out bus (4) but is shown as a close-up.

6) This is a photographic image showing the front page of the *Daily Mirror*, which is dated Wednesday, December 16th, 1936. This is quite clear, and shows the headline '*Former Stage Beauty Found Dead In Area Four Days*'.

7) A very poor photograph of a

soldier in uniform - only just discernable.

8) An Edwardian group, possibly taken at a wedding from an original sepia print. This image is unfortunately of very poor quality.

9) As previous photograph, but from a different angle. Also very poor quality.

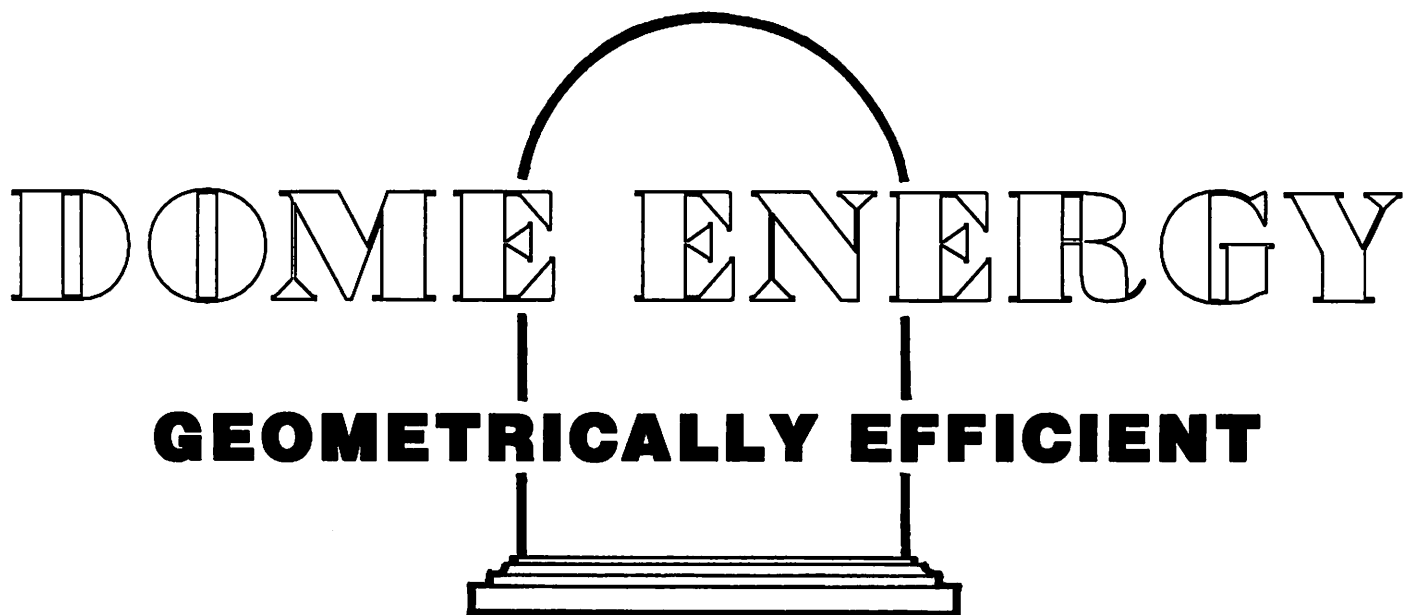
10) This is a very interesting photographic image of an early map, showing lines of navigation and some illegible writing. This was later confirmed to be a part of the very first map of Canada.

11) Finally, the last print was of a barely recognisable photograph of a cloaked woman or bride.

Although the majority of these photographs could be described as poor in quality, it detracts nothing whatsoever from the result of the experiment. To receive any image at all would of course be amazing, but to have been given no less than eleven on that very first attempt at spirit photography is staggering, whatever the quality!

The spirit team have always stated that every sitting of the group is an individual experiment and must be seen as such by all involved, with no guaranteed results. But those of us who sit in the Scole group remember vividly that particular sitting, when we received our very first psychical photographic images. None of us realised at the time that it was just the start of a series of many astonishing photographic experiments in which we would all be taking part.

Soon afterwards, we were asked to bring *two* cameras into a sitting, which we did without question. The results of that experiment, which were *even more* memorable, I shall describe in a future edition of the bulletin! ■



DOME ENERGY

GEOMETRICALLY EFFICIENT

When our spirit team first asked us to provide them with a glass dome for their experiments, we had great difficulty in imagining exactly what use they might have had in mind for it, and how it might fit into the experimental pattern of the group. The instruction itself seemed simple enough, but all of us had great problems in finding such a piece of equipment at the right price!

As we enquired about new glass domes, to be made specifically to our requirements, we quickly discovered that their price was horrendous. Perhaps then, the answer lay in an old dome? But these turned out to be very sought-after items, which in the main were antique in character, and even more expensive! For several weeks, group members toured boot sales and junk shops to no avail until one eagle-eyed individual spotted a small glass dome locally which he purchased at a reasonable price.

Almost simultaneously, a larger version was seen in the window of a glassware shop in Bury St. Edmunds, and whilst it did contain a rather dubious plastic display, it appeared to meet our needs, being approximately 15 inches high and six inches in diameter with a wooden base. Fortunately, this time the price

was right, and we bought it, much to the amusement of the shop-owner, who couldn't understand why we wanted to take out the plastic display and leave it behind in the shop!

So instead of just the one dome we had been asked to obtain, we suddenly found ourselves with *two*, which the spirit team told us could both be used in the experiments, proving this to us quite early on, when several small items from the room were apportioned into both the domes during the course of sittings.

Eventually we were asked to remove the smaller of the domes as they intended to concentrate their efforts on the largest of the two. At the time it was explained to us by the spirit scientists that the dome would be used to retain energy which would build up over a period of time, until it could be used for the purposes of physical and tangible illumination within the experimental work they were undertaking.

There are of course a number of advantages in the prospect of spirit themselves providing the light they need during experimental sittings, such as:-

1) The lighting will be totally compatible with whatever work is being done.

2) It is under the sole control of spirit, so that they can regulate the intensity and duration of the lighting as necessary.

3) Spirit forms and objects can be seen in this light, as well as the positions of sitters themselves.

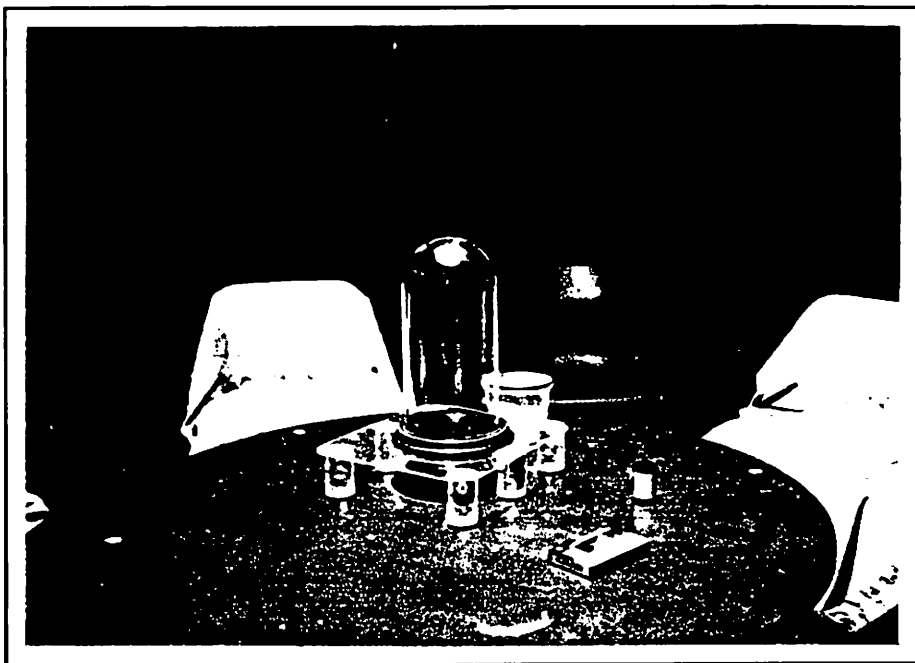
Because of the ongoing collection of energy building up within the dome which sometimes took a number of weeks to reach a suitable level for it to be used by the spirit team, the group were advised not to touch the dome, or even to go too close to it, both during and between sittings, in case we caused an accidental discharge of the energy within it, which in turn could set the team back by several weeks.

During a recent conversation with a scientist, he suggested that the dome may be behaving like a Leyden Jar (the earliest form of capacitor) in that it is storing up energy generated within the room and remaining charged for some time. However, such energy could well be discharged through a body if somebody touches it intentionally or otherwise.

In the course of our own studies we have additionally discovered that domes are highly energy efficient, and are constructed in a shape which has proven to be the most efficient geometrically. This is because a dome shape is

able to enclose the greatest amount of space relating to the smallest surface area. In Los Angeles, U.S.A., a recent project known as *Genesis One* has created a complete village of fibre-glass solar-powered domes for the homeless, these structures being dubbed *Omnispheres*. Our spirit scientists obviously know a lot about energy and shapes!

Of great interest to us, and I am sure to our readers also, is the fact that the group have been given the names of some of the spirit scientists who work with the Scole group, (which I hasten to add we are not at liberty to disclose at the moment) and totally unknown to us until it recently emerged through our research has been the fact that whilst on the earth, at least four of these names were linked together by the work that they were doing. In addition, their earthly work was not too far removed from the experiments we are now experiencing in the weekly sittings! As we now understand it, the current team of spirit scientists was specially selected for the skills that each has been able to bring to the work of the Scole group.



The above picture shows the interior of the cellar at Scole, where experimental sittings are held by the Scole Group. Clearly seen here is the glass dome and its position in relation to the sitters.

Things have moved on rapidly since we were first asked to provide a glass dome. Although we had no idea initially what its use might be, our minds have been suitably 'boggled' since by the

visible phenomena we are now witnessing because of the presence of the dome. I don't believe, however, that any of us will in future be surprised by any further developments in which the dome might be involved! ■

TWO YEARS OF PHYSICAL PHENOMENA AT SCOLE

Over a period of almost two years since October 1993, when we received our very first example of phenomena at Scole in the new way, the substantial list of different forms of physical phenomena which have

been witnessed by the Scole Experimental Group to date has grown on a regular basis to now stand at an amazing 76 types of phenomena.

These have all been produced

and pioneered by the spirit "team" using energy, as opposed to the more traditional methods which have been employed for well over a century. A small selection from the comprehensive list has already been described in detail in previous issues of the *Spiritual Scientist*, but we thought that at this stage, many of our readers might like to see a complete catalogue of the main types of phenomena we have experienced - the majority of them have been witnessed by sitters on several occasions. The dates which are referred to here however, are the dates on which a particular effect was noticed for the first time:-

- 1. 4th October, 1993.**
Apport. (Over 50 received since)
- 2. 13th December, 1993.**
Cowbells rang. (These were hanging from the ceiling in the cellar).
- 3. 13th December, 1993.**
Spirit Lights seen by all.
- 4. 13th December, 1993.**
Loud Electrostatic Crackling in the air.
- 5. 13th December, 1993.**
Trumpet rotates on table and rattles. Trumpet Levitation and movement around room (for 8 mins.)
- 6. 20th December, 1993.**
Loud Thumps on cellar wall and ceiling.
- 7. 27th December, 1993.**
Medium and his chair turned through 180 degrees.
- 8. 27th December, 1993.**
Constant Raps, Taps & Crackles from all over room. Pinging on Lightbulb.
- 9. 27th December, 1993.**
Hissing noise through levitated trumpet.
- 10. 3rd January, 1994.**
Table physically stretched in a diagonal direction. Kisses blown through trumpet. Table levitated. Levitated trumpet touched sitters. Spirit people heard sitting on outer chairs.
- 11. 3rd January, 1994.**
Water sprinkled on sitters. Loud 'drumstick' raps on table. Levitation of various objects.
- 12. 17th January, 1994.**
Extended Voice Phenomena. (A new type of phenomena altogether, where the communicator's voice, speaking through the medium in deep trance, is extended away from the medium's body in microseconds to emanate from various other parts of the room, and even from deep within the walls of the cellar). Sitters also heard a noise akin to chopsticks rattling together.
- 13. 24th January, 1994.**
Sitters touched by spirit lights, which on contact produced various sensations akin to the fluttering of butterfly wings, the movement of loops of string and/or solid rods at different times.
- 14. 7th February, 1994.**
Spirit lights pass through solid table on several occasions.
- 15. 14th February, 1994.**
Tambourine levitated and played to music.
- 16. 14th February, 1994.**
Luminous patches the size of a football seen by all in room.
- 17. 21st February, 1994.**
Spirit Lights illuminated objects and parts of sitters (in the same way that a torch might do, showing resultant illumination, but no 'beams' visible in the darkness between tiny spirit light source - which could itself be seen - and resultant area of light).
- 18. 21st February, 1994.**
'Sheets' of spirit light illuminated various parts of the room.
- 19. 21st February, 1994.**
Non-animated illuminated projected image of spirit helper.
- 20. 28th February, 1994.**
35mm Camera levitated and moved round room taking 'snaps' and winding itself on in a totally darkened room. (Later found 11 separate photographs of various subjects on film. These, as we were later told, being copies of photographs already existing in some part of the world).
- 21. 7th March, 1994.**
Objective whistles, coming from various parts of the room.
- 22. 14th March, 1994.**
Massive drop in room temperature. Visual Projected Image (Again, to our knowledge, an entirely new form of phenomena, where an illuminated image appears to all in almost holographic form - in this case, an apparently three dimensional piece of material).
- 23. 14th March, 1994.**
Objective Spirit Writing (this came as clear writings on paper supplied by the group with a pencil provided for the purpose). Spirit Photos obtained of the Canopy of Energy over group.
- 24. 28th March, 1994.**
Sitters touched by apparently solid animated hands.
- 25. 4th April, 1994.**
Strong Psychic Breezes swept round room.
- 26. 4th April, 1994.**
Child's hands clapped loudly in mid-air. Also sounded as though a pencil was being run backwards and forwards across the ceiling for long period of time.
- 27. 11th April, 1994.**
Solid figure of Chinese Guide heard to walk around group, finally standing in front of one sitter, holding her hands and speaking in his own voice.
- 28. 18th April, 1994.**
Sitters touched by solidified 'tassles'. Footsteps heard all around room. Toy Xylophone played.
- 29. 18th April, 1994.**
Electric Wall Socket Switch turned on and off several times. (causing malfunction of one of the tape recording machines).
- 30. 18th April, 1994.**
Table illuminated, clearly showing two solid, animated child's fingers on it. Skull shaped Visual Projected Image shown to sitters. Sitters trousers tugged by solid hand.
- 31. 18th April, 1994.**
Solidified Spirit Children answered questions in their own voices with 'yes' and 'no'.
- 32. 30th May, 1994.**
Sustained splashing in bowl of water sounded like bird bathing itself.
- 33. 4th July, 1994.**
Incense Stick apported and *lit* by psychic means.

34. 4th July, 1994.

Set of bells physically untied from ceiling and lowered to floor. Sacred Ash with healing properties apported into group.

35. 26th September, 1994.

Spirit Light performed an audible 'tap dance' on table.

36. 26th September, 1994.

Spirit Light seen to do series of 'Flea Hops' across floor.

37. 3rd October, 1994.

Tape Recorder controlled by Spirit - switched on and off.

38. 3rd October, 1994.

Polaroid 'Flat' Film Pack was audibly ripped open by spirit.

39. 3rd October, 1994.

Several colour images obtained on Polaroid 'Flat' Film of clear energy fields, without film being 'exposed'.

40. 7th October, 1994.

Spirit Light became a 'Ball of Energy', about size of a golf ball, and with several sparkling facets.

41. 18th October, 1994.

Two Spirit Lights, about 2" apart, blinked on and off alternately like a neon sign.

42. 18th October, 1994.

Ping Pong Ball bounced on the table.

43. 31st October, 1994.

Spirit Light seen *inside* Dome.

44. 31st October, 1994.

Ping Pong Ball apported into one of the Domes.

45. 14th November, 1994.

Spirit Light 'jigs' within ceramic Bowl.

46. 21st November, 1994.

Spirit-transmitted original images obtained on Polaroid 35mm factory-sealed Black & White film.

47. 30th December, 1994.

Colour images received on 35mm Polaroid sealed colour film for first time. The film was apported into glass dome.

48. 2nd January, 1995.

Ceramically Enhanced Voice (A new phenomena where a remote and loud spirit voice was heard speaking to us as if from within a ceramic bowl "to give it depth".)

49. 13th January, 1995.

Original Signature, and sacred scripts received directly onto a factory-sealed film.

50. 23rd January, 1995.

Solidified Form brought into glass Dome, where it stayed for some time.

51. 23rd January, 1995.

Continuous 'Seascape' Image over several inches long received on 400 ISO Black & White Polaroid Film.

52. 17th March, 1995.

Two whole Polaroid 35mm Films - one B/W and one colour - were filled with 15 images each.

53. 9th April, 1995.

Glass Dome lit up for 13 mins. In subsequent sittings, this period of illumination has since been extended up to as much as one and three quarter hours!!

54. 24th April, 1995.

Silently, in total darkness, chair lifted onto table astride dome, and spirit child sits on it. Nothing disturbed or damaged!

55. 24th April, 1995.

Flat Polaroid picture almost white (should in fact be black) except for a green flash down one side. After 10 minutes, definite image of an object with clear outlines showed and began to develop. But 10 minutes later, the object and its outlines disappeared just as mysteriously as it had come.

56. 26th April, 1995.

Red light like slightly curved neon tube, about 4 inches long, appeared in top of dome, with an apparently smoky haze close to it.

57. 26th April, 1995.

Red pencil-like beam of light from bottom of dome shone across table. (We were able to take successful photographs of

this). Later, brilliant pea-size source of red light at top of dome beamed its illumination onto sitters faces, lighting them fully. Occasionally the beam of red light swept around the room from the top of the dome, causing it to resemble a lighthouse.

58. 26th April, 1995.

Flashes of red luminosity lit up large areas of the room momentarily.

59. 1st May, 1995.

Red spirit light entered into the plastic legs of dome support during sitting, which enhanced and intensified its effect.

60. 1st May, 1995.

Red light entered closed opaque tupperware pot, causing it to light up like a table lamp.

61. 1st May, 1995.

Sitters were shown S.V.O's. (These are Sustained Visual Objects from spirit with no earthly alternative). They variously appeared to be like caves, sea urchins and segmented oranges and were self-illuminated from within. One appeared in the dome to resemble an elaborate and beautiful flower formation created of an unearthly fabric. These objects moved, grew, changed and subsided in front of our very eyes.

62. 1st May, 1995.

Solid spirit person showed sitters his hands and fingers in the light from the dome.

63. 1st May, 1995.

Spirit hand picked up the spirit light, holding it in his palm below his hand, so that the hand was well-illuminated for us to view.

64. 26th May, 1995.

Green Spirit Light produced.

65. 29th May, 1995.

Green-hued spirit lighting produced in a new and different way using crystal energy. The spiritual essence of a crystal was brought into the dome. To us it appeared as though the green light was coming from a solid

crystal which we could see in the bottom of the dome with all its facets, though in reality it was not solid - just the spiritual essence - which gave it a solid appearance.

66. 29th May, 1995.

Solid spirit person's shadowy outline seen by all in light from "crystal". Could clearly define the area of his face and hands as he rocked backwards and forwards on his chair.

67. 5th June, 1995.

Solid spirit form held a luminous armband in his hand - moving it around to pinpoint his actual whereabouts, and illustrating his height with it.

68. 10th June, 1995.

Recording tape ejected from a tape recorder whilst it was recording by solid spirit person.

69. 10th June, 1995.

Self luminous M.V.O's (mobile visible objects) moved round the room, pausing and posing briefly for recognition at various points in the room. One in particular

resembled a 2 foot high "ghost" whilst another appeared to be about the size and shape of a Rugby ball or melon.

70. 12th June, 1995.

Solid spirit shapes in room now absorbed and reflected light so that the forms appeared almost luminous, and were clearly visible to us as they moved heads, arms and hands in our full view.

71. 12th June, 1995.

Solid spirit form stuck a luminous tab onto his forehead so we could see his exact position whilst he rocked back and forth on his chair - then he placed the tab on his hand and proceeded to wave to us.

72. 3rd July, 1995.

First Spiritual Energy Voices (Independently Generated) spoke to us. These come from all parts of the room, apparently emanating from the solid spirit people, and are very individual in timbre, personality and accent, according to the communicator.

73. 3rd July, 1995.

Solid spirit entity drinks water.

74. 3rd July, 1995.

Tupperware tub used by solid spirit entities as a soundbox to improve depth and quality of energy voices.

75. 7th July, 1995.

Tape recorder playing music was stopped by spirit hand, which then ejected the cassette and placed it carefully in front of the recorder.

76. 10th July, 1995.

Door handle to cellar was rattled noisily as we sat, with the door being opened by a solid spirit entity from within. ■

The New Spiritual Science Foundation,
Street Farmhouse,
Scole, Diss, Norfolk
IP21 4DR
Tel: 01379 741839

Copyright © 1995 - The New Spiritual Science Foundation. All Rights Reserved.
No part of this publication may be reproduced without written permission from the Publisher

(PLEASE COMPLETE THIS FORM IN BLOCK CAPITALS)

Please find enclosed my annual subscription (4 Issues) for "The Spiritual Scientist" (Official Bulletin of the New Spiritual Science Foundation) which I would like to receive quarterly, starting with Issue number

I Enclose: £4.50 (U.K.) £6 (Overseas - Surface Mail) £8 (Overseas - Airmail)
(DELETE AS APPROPRIATE)

YOUR NAME:

ADDRESS:

.....

.....

.....

..... **POSTCODE:**

OCCUPATION:

TELEPHONE NO:

Please make cheques payable to the "New Spiritual Science Foundation"
Overseas Subscribers please send subscription by cheque or bankers draft, in Sterling drawn on a U.K. Bank or by means of an International Money Order for £6 or £8 Sterling. Thank you for your co-operation.